



soleterre

ANNUAL REPORT

2022

ANNUAL REPORT **2022**

Director: Damiano Rizzi

Editorial director: Federica Villa

Editing: Alessandro Baldo, Stefano Oltolini, Marta Pellizzi, Federica Villa

Translation: Silvia Velardi, Marta Pellizzi, Giacomo Carlini

Graphic design: Lucrezia Colombo

Printing: Flyeralarm s.r.l.

Photography: Photo Archive, Andrea Bortolin, Fabio Bucciarelli, Simone Durante, Stefano Micozzi, Ugo Panella

N.B. To protect the real identities of the children, the images and some references have been changed. Parents, in order to have a social impact, have consented to the use of the images.

INDEX

Letter from the President	3
Who we are, vision, mission and values	4
Institutional structure, operational structure and where we work	5
Goals	6
Stakeholder map	7
Achievements	8
Ukraine Emergency Program	9
Great Against Cancer Program	12
Work is Progress Program	14
Covid-19 psychological support Program	15
Supporters and fundraising	16
Financial accounts	18

Methodological note

2022 financial statement includes balance sheets, management reports, mission reports and notes to the financial statement, approved by the Board of Directors and the Board of Participants on 30/06/2023. The Financial Statement is integrated by these documents as well as by the report of the independent auditing firm PricewaterhouseCoopers SpA, and by the report of the statutory auditor.

LETTER FROM THE PRESIDENT

Dear readers,

After more than a year from its beginning, the conflict in Ukraine continues and there are no signs of reaching peace. With obvious and dramatic consequences: both humanitarian, as well as political and economical.

We will remember 2022 as the year we focused our efforts to find balance in front of the confusion generated by the continuous emergencies we are subjected. Hardly in fact, we would have expected to review our plans to bring aid under the bombs.

What began as a flash operation for the medical evacuation of 19 Ukrainian children suffering from cancer has grown into an international project that has saved from the bombs more than 2,000 children and young people sick and injured by the fighting.

2022 was also the year we celebrated 20th anniversary of Soleterre, continuing to offer support and care to young cancer patients and their families with the international program GREAT AGAINST CANCER.

With the belief that health is balance between body, mind and external environment, we have carried on the WORK IS PROGRESS activities dedicated to enhancing the potential of each individual by promoting their personal, cultural and occupational progress.

Over time we have seen that protecting people's health, by also protecting their family and social ties, greatly improves the chances of healing and reduces anxiety and stress levels.

Today we are receiving signs that our strategy is right, and for that I can only thank all of you.



Damiano Rizzi
Soleterre Onlus President

A handwritten signature in black ink, appearing to read 'Damiano Rizzi'.



VISION

Soleterre's vision is a world where the the right to health is universal. Where even the most vulnerable people are not threatened by social, economic or cultural inequities. A world where everyone has access to care when they get sick, where they can really feel good (physically, psychologically and socially) when they are healed, a world where people do not risk violence because of who they are or what they believe in.

MISSION

Soleterre is a Foundation that works for the universal recognition and application of the right to health in its broadest and most integral meaning of psycho-physical and social well-being. For this reason, in addition to the commitment to guarantee medical care and assistance, Soleterre is active in safeguarding and promoting psycho-physical well-being for every person, in any social condition and in any part of the world. Soleterre is committed to the right to health and is prepared to intervene wherever inequity, inequality and violence prevent that right from being applied. Because health is social justice.

HEALTH - SOCIAL JUSTICE PEACE - SOLIDARITY

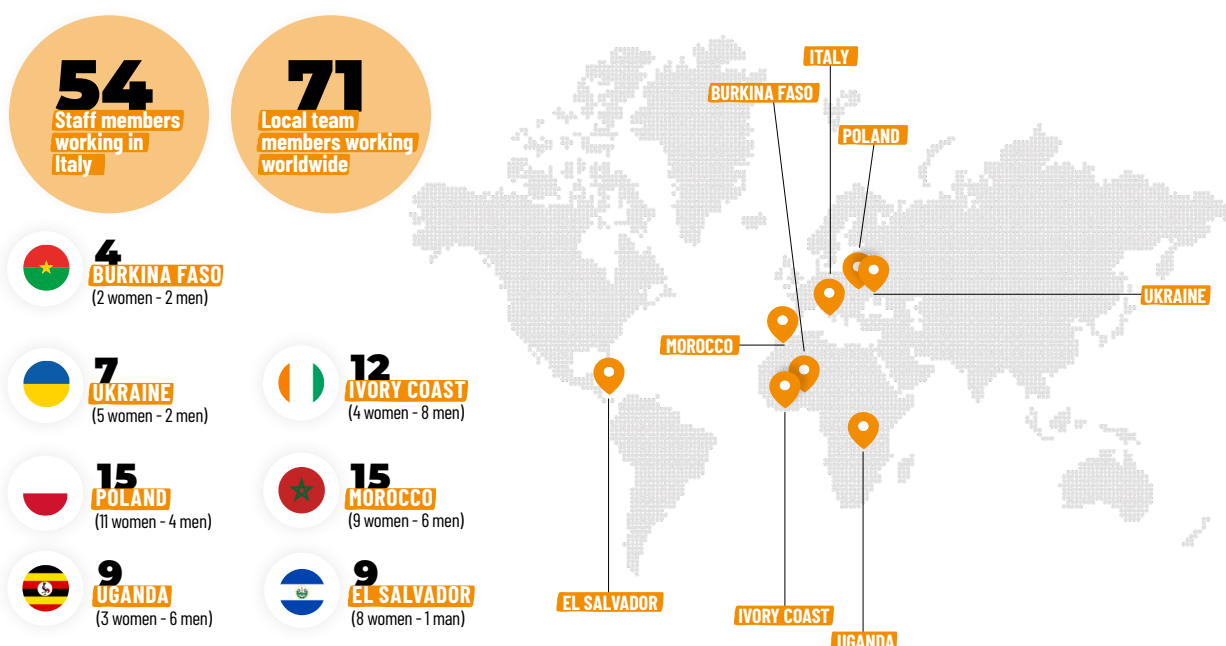
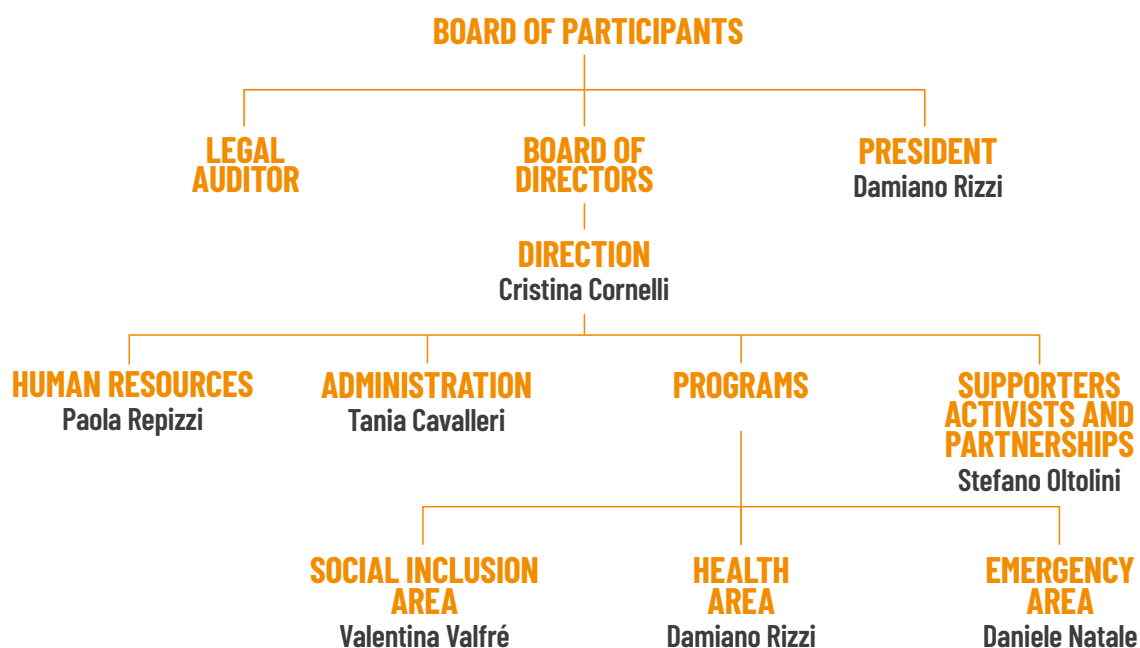
In 2022, Soleterre implemented **80 projects** across **8 countries** in order to substantiate its commitment, including Italy, Ukraine, Poland, Uganda, Morocco, Ivory Coast, El Salvador and Burkina Faso. As a result of these projects, Soleterre now supports **34 health centers**, manages **7 shelters** and has developed **7 medical-scientific research projects**. In Italy, our headquarters staff of **54 individuals** partnered with **108 external professionals**. Abroad, we deployed **17 teams**, for a total of **71 local staff members**. Overall, these projects directly had an impact on **62,196 individuals** who all benefited from treatments, training and interventions.



INSTITUTIONAL & OPERATIONAL STRUCTURE:

WHERE WE ARE

Since 2014, Soleterre has been a Foundation and private entity, recognized as ONLUS, with legal responsibility.



GOALS

Soleterre Foundation's main objective is linked to the One Health approach, **as defined by the United Nations** in December 2021, whereby the health of human beings and the environment are closely connected and interdependent. In this integrated and unifying approach, the balance and the optimization of one person's health with the ecosystem is done in a sustainable way. This approach involves multiple sectors, disciplines and communities to promote well-being and address threats to health and ecosystems, fostering fair and holistic solutions. For Soleterre, **health is seen as a state of holistic well-being of the person, in his physical, psychological and social dimension.** In the past year, Soleterre confirmed and strengthened its commitment in achieving the following goals:

1

STRATEGIC
OBJECTIVE

To support the treatment of oncological disease and non-communicable diseases

from children through the promotion of scientific research and medical treatment; through the protection of psychological, emotional and relational well-being for the entire family unit; and fighting the economic poverty and the financial burden of childhood cancer.

2

STRATEGIC
OBJECTIVE

To promote the economic inclusion of people in precarious employment conditions

recognizing that the improvement of living conditions relies on work and valuable relationships; that job acquisition and security depends upon skill strengthening; that an evolved society is an inclusive society that knows the value of diversity.

3

STRATEGIC
OBJECTIVE

To guarantee the access to mental health support services and psychological

relief to people most exposed and vulnerable to social and economic fragility, affected by natural disasters, illness (such as the COVID-19 pandemic emergency) or at social risk (wars, forced migration, violence and abuse, etc.).

STAKEHOLDER

MAP



INSTITUTIONAL DONORS

13

INSTITUTIONAL DONORS

- Italian Agency for Development Cooperation
- European Union
- 5x1000 IRPEF
- Italian Episcopal Conference
- Catholic Church - Italian Episcopal Conference
- Italian Buddhist Union
- Ministry of Health
- Ministry of Labor and Social Policies
- Presidency of the Council of Ministers
- Ministry of the Interior
- Lombardy Region
- Municipality of Milan
- OCHA Office for the Coordination of Humanitarian Affairs



ASSOCIATION NETWORKS

11

ASSOCIATION NETWORKS

- Forum SaD
- SaD Forum
- A.I.E.O.P. Italian Association of Hematology and Pediatric Oncology
- UICC - Union for International Cancer Control
- CCI - Childhood Cancer International
- Universal Health Coalition
- SDG Watch Europe
- F.A.V.O - Italian Federation of Voluntary Associations in Oncology
- LIBERA - Associations, names and numbers against the mafias
- Qubi Selinunte Network
- Uganda Cancer Society
- Link 2007



PROJECT PARTNER

191

PROJECT PARTNER

ACHIEVEMENTS

In 2022, Soleterre continued the promotion, management and monitoring of the two strategic programs that feature its historical vocation: the international program for pediatric oncology, "Great against cancer", carried out in Italy, Ukraine, Morocco, Ivory Coast, Uganda and Burkina Faso; and the international "Work Is Progress" program, promoted in Italy, Morocco, Ivory Coast and El Salvador. After Russia launched the massive attack to Ukraine territory on February 2022, Soleterre immediately strengthened its commitment in Ukraine, and extended it to Poland, to flee the children from war.

PROGRAM GREAT AGAINST CANCER

34.816 Beneficiaries
in Italy, Ukraine, Poland,
Morocco, Ivory Coast,
Uganda, Burkina Faso

29.718
People benefiting
from treatment and prevention
services in health centers supported

2.162
Children
with cancer assisted

2.006
Parents of children
affected by cancer

370
Professional figures
(doctors, nurses, operators)
trained and accompanied

560
Families supported
with financial aid

PROGRAM UKRAINE EMERGENCY

12.498 Beneficiaries
in Ukraine, Poland

1.000
Sick and injured
children assisted

970
Patients evacuated
to Italy

4.500
Displaced people
reached by psychological
support

6.000
Displaced people
reached by emergency aid

28
People welcomed
in Poland

Total beneficiaries
62.196
in 2022

PROGRAM COVID-19 PSYCHOLOGICAL SUPPORT

1.741 Beneficiaries
in Italy

PROGRAM "WORK IS PROGRESS"

13.141 Beneficiaries
in Italy, Morocco, Ivory
Coast, El Salvador

425.502 Total beneficiaries reached
by awareness activities,
including:

20.400
Newsletter readers

131.748
Social media users

273.354
Website visitors

10.892
Beneficiaries of accompaniment
to work (work progress)

1.343
Beneficiaries of
personalized coaching and
psycho-social support
(personal progress)

906
Pupils, parents and teachers
beneficiaries of educational
interventions (cultural progress)

PROGRAM

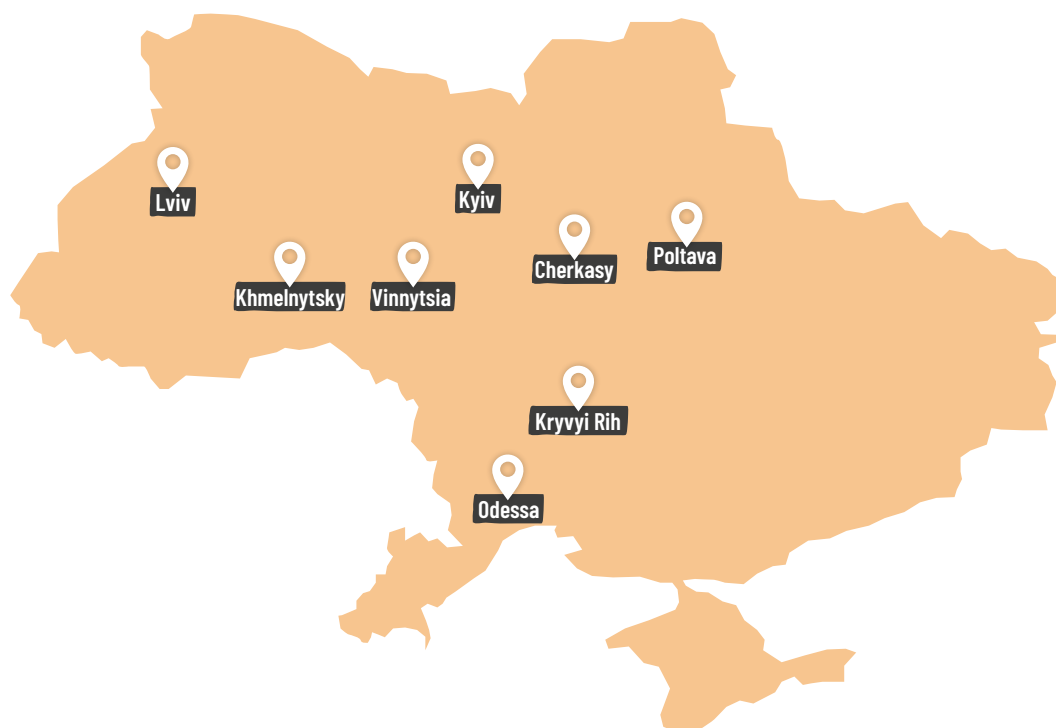
UKRAINE EMERGENCY



In 2022 Soleterre started a Humanitarian Emergency program to cope with the severe consequences of the war in Ukraine, activating medical, psychological, housing and food services for displaced people, children with cancer and war wounded, their parents and family members, both in areas of Ukraine and in the main areas of displacement and refuge along the Polish border.

The initiatives put in place with partners in different countries have evolved into interventions of care, training, assistance, comfort and accompaniment. The interventions have touched a broad spectrum of beneficiaries including sick and injured people, their families and caregivers, socially and occupationally disadvantaged people, displaced and war-traumatized people, medical and nursing staff, educational and school staff, community leaders and institutional representatives. The set of actions deployed resulted in a dense network of awareness-raising initiatives, implemented both online and in-person, on humanitarian emergency issues.

The war in Ukraine and related attacks to the health care system and supply chains generated in very serious impacts on the care of children with cancer, who require in-time access to diagnostic, therapeutic and life-sustaining care.



Thanks to a long presence in the country since 2003, and close collaboration with major public pediatric onco-hematology departments, from the very day the conflict broke out, Soleterre took immediate action to bring relief to children hospitalized in serious condition and unable to be discharged: they were first treated for 120 hours under the bombs, in hospital bunkers, and then evacuated out of the country through the global SAFER Ukraine program, together with St Jude Children's Research Hospital, Polish Society of Pediatric Oncology and Hematology (PSPOH), International Society for Pediatric Oncology (SIOP) Europe, Childhood Cancer International (CCI) Europe and various government agencies.

In addition to war, Ukrainian people had to cope with the harsh winter and the lack of electricity and heating. Soleterre took action to ensure immediate emergency response services in the districts of Kyiv, Poltava and Cherkasy, and distributed goods of basic necessities, food and hygiene kits, medicines, economic support, wood and stoves to over 6,000 people in vulnerable conditions.

It also rehabilitated an old building in the municipality of Neslukhiv (Lviv) that is now a home for 30 families coming from war zones in eastern Ukraine. In addition to comfortable housing, the guests receive from Soleterre also economic and psycho-social help to start a new life away from the fighting.



 **1.000** Sick and injured children assisted

 **970** Patients evacuated to Italy

 **7** Shelters where we provided psychological support

 **4.500** People reached by psychological support

 **2** Shelters for children with cancer

 **6.000** People reached by basic necessities aid



In Poland, Soleterre is considered a benchmark for the provision of services for mental health and psycho-social support. The team, consisting of 7 psychologists and 1 cultural mediator, provides Ukrainian refugees multi-dimensional support.

The interventions take place in refugee centers, shelters, train stations, child-friendly spaces and pediatric hospital wards and, through 2 mobile units, the team is able to reach different locations scattered widely throughout the country.

The main beneficiaries assisted in 2022 include: children, teenagers, adults and the elderly with signs of distress; people with physical and mental disabilities; people with mental disorders and in need of specialized care; survivors of gender-based violence; people with addictions (alcohol and drugs); people with post-traumatic stress disorder; staff of organizations at risk of burn-out; shelter managers and volunteers; pediatric cancer patients and their families.



Meanwhile the organization of medical evacuation flights take place, Soleterre has prepared staff and facilities capable of best welcome oncology patients arriving from Ukraine and destined to be taken under care by 19 different Italian pediatric health facilities located throughout the country. A team of language mediators, psychologists, social workers and reception workers active both through a phone line (to respond to practical, legal and bureaucratic needs), and within a housing facility ("Casa Soleterre"), in Pavia, identified specifically to host families near the Fondazione IRCCS Policlinico San Matteo for a long term.

Casa Soleterre has 12 individual apartments and 3 large communal spaces; in these spaces it was possible to run weekly workshops and Italian classes with a volunteer educator, and organize trips out of town at least once a month, useful to let people better know the region, and offer moments of serenity away from the hospital environment.



PROGRAM

GREAT AGAINST CANCER



2022 marked the 12th anniversary of "Great Against Cancer" international program for pediatric oncohematology. The program started in Europe - Italy and Ukraine - and extended over the years to Africa - Ivory Coast, Uganda, Morocco, Burkina Faso - with the prospect of reaching other countries in the future, starting with El Salvador.

The program is in line with the international goals set in 2018 by the World Health Organization with the "Global Initiative for Childhood Cancer" "which aims to reduce the number of sick children and to increase survival rates globally up to 60%, reducing the social inequality gap between the North and the South of the world.

Great Against Cancer adopts an integrated approach, which aims to guarantee rights and access to care at every stage of the disease and offer holistic support to each child and his / her family, both in accessing quality care and in improving social quality of life and psycho-physical well-being.

We can therefore be proud of the following achievements: **2,868 children and parents have been helped in the daily challenge against cancer, with activities and services in the field, all over the world.**

The most important results in 2022:



Support to health center

18 Health center supported

29.718 Users of the healthcare centers supported

Training

370 Doctors, nurses and trained operators



Research

7 Research project supported

10 Active researchers

€295.310 Funding for research project



Physiotherapy

1.027 Rehabilitation and
physiotherapy session
carried out

195 Child
beneficiaries



Housing

885 People hosted
of which 436 children + 449 family guests

141 Beds
available



Psychological support

9.991 Psychological
session provided
of which 5.090 sick children + 4.901 for their
families

595 Session with health
staff and operators

1.946 Individuals receiving
support
of which 954 sick children + 992 family careers

337 With healthcare
figures



Financial support

560 Family beneficiaries
of economic aid

€241.981 Value of the
aid provided



Socialization activities

385 Socialization activities
carried out by educators
and volunteers

1.142 Activities for sick
children and their parents
of which 577 children + 565 parents

PROGRAM

WORK IS PROGRESS



Soleterre takes care of the needs of those at risk of poverty and economic exclusion, through an integrated **program of accompaniment to work aimed at enhancing the potential of each individual**, helping them to find a worthy job and thus improve their conditions of life.



Work progress

6.379 Beneficiaries of information and first guidance

951 Beneficiaries of vocational training

2.904 Beneficiaries of accompaniment to work

530 Beneficiaries of self-entrepreneurial activities



Personal progress

1.343 Beneficiaries of personalized coaching and psycho-social support

906 Pupils, parents and teachers benefited by educational interventions



Cultural activities

157 Community associations leaders trained in 125 training days

101 Current partnerships with public bodies, volunteer associations, companies and labor agencies

20 Territorial coordination and co-programming table open with 242 particular events

11.617 People joining 54 public communication events

21.849 Subscribes to social networks

PROGRAM

COVID-19 PSYCHOLOGICAL SUPPORT

Soleterre Foundation's Covid-19 psychological support system is aimed to comprehensively assist with economic, emotional and social distress due to the pandemic. We focused on the following: Covid-19 patients, people recovered, persons who lost a beloved one, health staff active on the front lines, individuals unemployed as a result of the pandemic, women victims of domestic violence, homeless people, individuals with addictions and / or previous psychological issues, individuals whose economic and social conditions were seriously impacted by the pandemic, at risk youth, students, parents and teachers.

1.741 Total beneficiaries
692 Non-hospital beneficiaries in Italy
209 Total intra-hospital beneficiaries
840 Beneficiaries in schools

The Network involved **90 therapists** in 2022 and reached **901 beneficiaries** cared for in **20 Italian regions**.

2.649 Totals interventions carried out in 2022

522 Interventions carried out in Covid-19 wards at Fondazione IRCCS Policlinico San Matteo

500 interventions conducted within ongoing research protocols

191 Long Covid-19 patients interventions

1.436 Interventions carried out by the National Network for Psychological Support

901 Beneficiaries involved in 2022

whose:

105 Covid-19 patients in treatment at Fondazione IRCCS Policlinico San Matteo

242 Patients and beneficiaries from the National Network for Psychological support

450 Health workers and Covid-19 patients involved in ongoing research protocols

104 Long Covid-19 patients



SUPPORTERS, COMMUNICATION AND FUNDRAISING

IN 2022

 **32.661** Occasional supporters

 **31.027** New occasional supporters

 **707** Continuous supporters

 **43.780** Donations

 **121** Corporate donors

 **27** Partner foundations

 **83** Major donors

Communication and fundraising activities in 2022 were strongly marked by the crisis in Ukraine and the immediate actions taken to communicate Soleterre's intervention and support request. In particular, the war in Ukraine since 24.02.22 has seen an immediate and effective capacity of the organization in:

- Activate actions to support the affected population, such as airlifting;
- Communicate immediately and effectively on media and social media about its presence in the crisis, the speed of intervention, and the usefulness of donating;
- Organize multichannel fundraising in record time: dedicated landing, social, contacts from media, contacts from 1to1 (companies, foundations, major donors);
- Devote maximum effort in effectively manning each communication and fundraising relationship, at the same time as managing a crisis in a country at war. For the Ukraine emergency, fundraising was 3.971 million euros, while the total fundraising for all of 2022 was 6.992 million euros.

FUNDRAISING

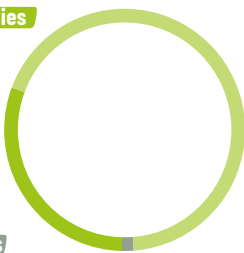
The Foundation's main communications objective was to position itself as a nationally and internationally active agent since the beginning of the war. Soleterre has consistently and tirelessly been operating to keep saving children with cancer and provide emergency humanitarian relief.

INCOME

30,8% Income from activities of general interest

68% Income from fundraising activities

1,2% Income from financial and patrimonial activities

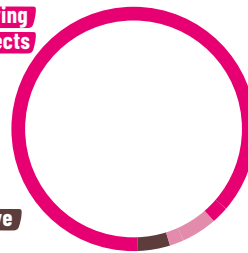


EXPENDITURES

91,8% Expenditures for carrying out humanitarian projects

5% Charges for communication and fundraising

3,2% Charges for administrative management and general support



22 Press releases



1.200 National media releases generated



+15.000 Followers on Instagram



114.000 Video views



FINANCIAL ACCOUNTS

MANAGEMENT REPORT SOLETERRE FOUNDATION

VALUES EXPRESSED IN EUROS

VIA STRESA 6 MILANO | CF 97329310161 | PI 04575250966

31/12/2022 31/12/2021

COSTS AND EXPENSES GENERAL INTEREST		
Raw materials, ancillary materials, consumables and goods	2.240.562	6.822.393
Services	2.169.117	1.436.856
Use of third - party assets	100.679	55.938
Staff	1.737.336	732.085
Amortisations	23.684	3.098
Write-down of tangible fixed assets	-	-
Provisions for risks and charges	-	-
Various managements costs	295.511	100.683
Initial Inventory	-	-
Provisions earmarked for OI	2.924.405	-
Use of provision earmarked for OI	-67.646	-
TOTAL COST GENERAL INTEREST	9.423.648	9.151.053
INCOME AND REVENUE FROM ACTIVITIES OF GENERAL INTEREST		
Income from memberships fees and contributions from founders	-	-
Income from associates through loan-related activities	-	-
Income from loans and services to members and founders	-	-
Donations	650.722	7.844.925
Income from 5x1000	85.449	79.932
Contributions from private individuals	-	-
Income from loans and services to third parties	-	1.704
Contributions from public bodies	660.903	880.310
Income from contracts with public bodies	-	-
Other income and revenue	1.776.475	101.025
Final inventory	-	-
TOTAL INCOME AND REVENUE FROM ACTIVITIES IN THE GENERAL INTEREST	3.173.550	8.907.897
Surplus / Deficit from activities in the general interest	- 6.250.098	- 243.156
COSTS VARIOUS ACTIVITY		
Raw materials, ancillary materials, consumables and goods	-	-
Services	-	-
Use of third - party assets	-	-
Staff	-	-
Amortisations	-	-
Write-down of tangible fixed assets	-	-
Provisions for risks and charges	-	-
Various managements costs	-	-
Initial Inventory	-	-
TOTAL COSTS VARIOUS ACTIVITY	-	-
INCOME AND REVENUE FROM VARIOUS ACTIVITIES		
Income from loans and services to members and founders	-	-
Contributions from private individuals	-	-
Income from loans and services to third parties	-	-
Contributions from public bodies	-	-
Income from contracts with public bodies	-	-
Other income and revenue	-	-
Finally inventory	-	-
TOTAL INCOME AND REVENUE FROM VARIOUS ACTIVITIES	-	-
Surplus / Deficit from various activities	-	-
COSTI E ONERI DA ATTIVITA' DI RACCOLTA FONDI		
Ordinary fundraising expenses	469.299	551.069
Occasional fundraising expenses	41.979	37.988
Other expenses	-	-
TOTAL COSTS AND EXPENSES FROM FUNDRAISING ACTIVITIES	511.278	589.057

MANAGEMENT REPORT SOLETERRE FOUNDATION

VALUES EXPRESSED IN EUROS

VIA STRESA 6 MILANO | CF 97329310161 | PI 04575250966

31/12/2022 31/12/2021

INCOME AND REVENUE FROM FUNDRAISING ACTIVITIES		
Income and revenue from fundraising activities	-	-
Ordinary income from fundraising	6.641.911	1.145.796
Occasional income from fundraising	350.405	243.753
Other income	-	-
TOTAL INCOME AND REVENUE FROM FUNDRAISING ACTIVITIES	6.992.316	1.389.549
Surplus/deficit from fundraising activities	6.481.038	800.492
COSTS AND EXPENSES FROM FINANCIAL AND ASSETS		
Banking	82.960	33.361
Loans	41.181	9.709
Building assets	3.231	-
Other assets	-	-
Provisions for risks and charges	-	-
Other expenses	52.063	41.555
TOTAL COSTS AND EXPENSES FROM FINANCIAL AND ASSETS	179.435	84.625
INCOME AND REVENUE FROM FINANCIAL AND ASSETS RELATED		
Banking	923	293
Other financial investments	-	-
Building assets	71.690	-
Other assets	-	-
Other income	50.768	41.437
TOTAL INCOME AND REVENUE FROM FINANCIAL AND ASSETS RELATED ACTIVITIES	123.381	41.730
Surplus/deficit from financial and asset-related activities	- 56.054	- 42.894
COSTS AND EXPENSES FROM GENERAL SUPPORT		
Raw materials, ancillary materials, consumables and goods	5.318	117.177
Services	47.063	93.644
Use of third - party assets	21.059	46.929
Staff	69.622	218.570
Amortisations	2.780	1.896
Write-down of tangible fixed assets	-	-
Provisions for risks and charges	-	-
Other expenses	1.879	3.568
Provisions earmarked for OI	-	-
Use of provision earmarked for OI	-	-
TOTAL COSTS AND EXPENSES FROM GENERAL SUPPORT	147.721	481.784
INCOME FROM GENERAL SUPPORT		
Income from general support	-	-
Income from secondment of staff	-	-
Other income from general support	-	-
TOTAL INCOME FROM GENERAL SUPPORT	-	-
Surplus/deficit from general support	-147.721	-481.784
Earnings before tax	27.166	32.657
TOTAL COSTS AND EXPENSES	10.262.082	10.306.519
TOTAL INCOME AND REVENUE	10.289.248	10.339.176
Tax	-	-
Surplus/deficit for the year	27.166	32.657

BALANCE SHEET ASSETS SOLETERRE FOUNDATION		VALUES EXPRESSED IN EUROS	
VIA STRESA 6 MILANO CF 97329310151 PI 04575250966		31/12/2022	31/12/2021
A	Membership fees and contributions still owed	-	-
B	Fixed assets	-	-
B I	Intangible fixed assets	-	-
1	Start-up and expansion costs	-	-
2	Development costs	66	139
3	Patent and industrial property rights	-	-
4	Concessions, licences, trademarks and similar rights	-	-
5	Start-up	-	-
6	Fixed assets under construction and advances	-	-
7	Other	-	-
	TOTAL INTANGIBLE FIXED ASSETS	66	139
B II	Tangible fixed assets	-	-
1	Land and buildings	68.950	-
2	Plant and machinery	2.139	-
3	Equipment	765	271
4	Other goods	180.296	48.814
5	Fixed assets under construction and advances	-	-
	TOTAL TANGIBLE FIXED ASSETS	252.150	49.085
B III	Financial fixed assets with separate indication for each item of amounts billable in the following year		
1	Share in:	-	-
1 a	Subsidiary company	-	-
1 b	Associated company	-	-
1 c	Other companies	-	-
2	Receivables	-	-
2 a	From subsidiary companies	-	-
2 b	From associated companies	-	-
2 c	From other third-sector bodies	-	-
2 d	From others	48.897	11.828
3	Other security	-	-
	TOTAL FINANCIAL FIXED ASSETS	48.897	11.828
B	TOTAL FIXED ASSETS	301.113	61.053
C	Current assets	-	-
C I	Inventory	-	-
1	Raw materials, ancillary materials and consumables	-	-
2	Products in production and semi-finished products	-	-
3	Work to order in progress	-	-
4	Finished products and goods	-	-
5	Advances	-	-
C I	TOTAL CURRENT ASSETS	-	-
C II	Receivables, with separate indication for each item of amounts billable in the following year	-	-
1	From users and customers	109.539	-
2	From members and founders	-	-
3	From public and supranational bodies	1.322.568	904.414
4	From private individuals for contributions	3.432.106	3.509.049
5	From other organisations in the same network	-	-
6	From third-sector bodies	39.846	17.758
7	From subsidiary companies	-	-
8	From associated companies	-	-
9	Tax credits	363	1.594
10	From 5x1000	-	-
11	Withheld taxes	-	-
12	From others	29.980	3.568
C II	TOTAL RECEIVABLES, WITH SEPARATE INDICATION FOR EACH ITEM OF AMOUNTS BILLABLE IN THE FOLLOWING YEAR	4.934.402	4.436.383
C III	Financial assets not considered fixed assets	-	-
1	Shares in subsidiary companies	-	-
2	Shares in associated companies	-	-
3	Other securities	-	-
C III	Total financial assets not considered fixed assets	-	-
C IV	Cash and cash equivalents	-	-
1	Bank and postal deposit	1.956.479	688.189
2	Cheques	-	-
3	Cash and cash on hand	16.215	5.694
C IV	TOTAL CASH AND CASH EQUIVALENTS	1.972.693	693.883
C	TOTAL CURRENT ASSETS	6.907.095	5.130.266
D	Accrued expenses and deferred income	99.325	189.940
	TOTAL ASSETS	7.307.533	5.381.259

PASSIVE BALANCE SHEET SOLETERRE FOUNDATION		VALUES EXPRESSED IN EUROS	
		31/12/2021	31/12/2020
A	Net assets	-	-
A I	Initial capital injection	100.000	4.700
A III	Tied assets	-	-
1	Statutory reserves	4.700	100.00
2	Reserves tied by institutions	2.887.738	619.945
3	Tied reserves granted by third parties	2.858.975	2.581.142
A	TOTAL TIED ASSETS	5.751.413	3.301.088
A III	Free assets	-	-
1	Reserves from profit or management surplus	124.977	92.320
2	Other reserves	1.621	666
A II	TOTAL FREE ASSETS	126.598	92.986
A IV	Surplus/deficit for the year	27.166	32.657
A II	TOTAL NET ASSETS	6.005.177	3.431.431
B	Provisions for risk and charges	-	-
1	For retirement pensions and similar obligations	-	-
2	For taxes, including deferred taxes	-	-
3	Other	-	-
B	Total provisions for risk and charges	-	-
C	Employment severance pay	243.882	210.122
D	Payables, with separate indication for each item of amounts billable in the following year	-	-
1	Payables to bank	193.532	942.409
2	Payables to other funding bodies	243.318	454.476
3	Payables to associates and founders for funding	-	-
4	Payables to other organisations in the same network	-	-
5	Payable for conditional donations	-	-
6	Advances	-	-
7	Payables to suppliers	269.147	150.702
8	Payables to subsidiary and associates companies	-	-
9	Tax payables	17.470	17.809
10	Payables to pension and social security associations	79.904	59.475
11	Payables to employees and collaborators	180.251	111.150
12	Other payables	837	-
D	TOTAL PAYABLES	984.459	1.736.021
E	Accrued expenses and deferred income	74.016	3.685
	TOTAL LIABILITIES	7.307.533	5.381.259


soleterre

ANNUAL REPORT

2022

Soleterre Foundation

c/o KBFUS, 551 Fifth Avenue, Suite 2400, New York, NY 10176

info@soleterre.org

www.soleterreus.org

